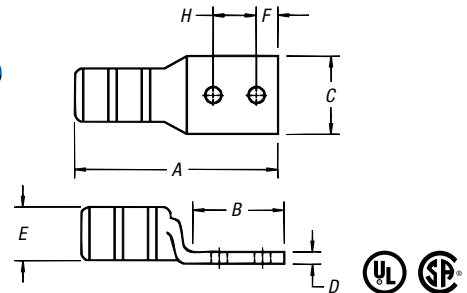


Compression Connectors for Copper Conductor

Two-Hole Lugs — Long Barrel 600V to 35KV (continued)



Peep Holes Available!
Add suffix -PH



Material: High-Conductivity
Wrought Copper
Finish: Electro Tin Plate

CAT. NO.	WIRE SIZE			DIMENSIONS (IN.)								DIE CODE	DIE COLOR
	CODE	FLEX CLASS G, H, I, K, M†	BOLT SIZE	A	B	C	D	E	F	H			
54814BE			¼	2.62	1.25	.83	.13	.57	¼	¾	45	BLACK	
256-30695-1299		125 Navy	¼	2.69	1.31	.81	.13	.57	¼	¾	45		
256-30695-1116	2/0 AWG	275/24 = 111 kcmil	¾	3.19	1.81	.83	.13	.57	¾	1	45		
256-30695-1116P		1/0 Weld	¾	3.19	1.81	.83	.13	.57	¾	1	45		
54862BE*			½	4.20	2.81	.83	.13	.57	½	1¼	45	ORANGE	
54815BE		2/0 Weld	¼	2.89	1.45	.92	.13	.63	¼	¾	50		
54816BE	3/0 AWG	325/24 = 131 kcmil	¾	3.25	1.63	.92	.13	.63	¾	1	50		
54864BE		150 Navy	½	4.48	3.00	.94	.13	.63	½	1¼	50		
54817BE			¼	3.15	1.38	1.03	.14	.70	¼	¾	54	PURPLE	
54818BE		200 Navy	¾	4.38	2.63	1.03	.14	.70	¾	1¼	54		
256-30695-1117	4/0 AWG	450/24 = 182 kcmil	¾	3.35	1.81	1.03	.14	.70	¾	1	54		
256-30695-1117P		3/0 Weld	¾	3.50	1.88	1.03	.14	.70	¾	1	54		
54866BE*			½	4.70	3.00	1.03	.14	.70	½	1¼	54	YELLOW	
256-30695-1245		250 Navy	¾	3.83	1.93	1.13	.14	.77	¾	1	62		
256-30695-1245P	250 kcmil	550/24 = 222 kcmil,	¾	3.83	1.93	1.13	.14	.77	¾	1	62		
54868BE*		4/0 Weld	½	4.92	3.00	1.13	.14	.77	½	1¼	62		
54819BE		300 Navy	¾	5.04	2.80	1.25	.15	.85	¾	1	66	WHITE	
54870BE	300 kcmil	250 Weld, 262, 650/24	½	5.23	3.00	1.25	.15	.85	½	1¼	66		
54820BE			¼	4.29	1.93	1.36	.18	.93	¼	¾	71	RED	
256-30695-1118		400 Navy	¾	4.33	1.93	1.36	.18	.93	¾	1	71		
256-30695-1118P	350 kcmil		¾	4.33	1.93	1.36	.18	.93	¾	1	71		
54872BE			½	5.40	3.00	1.36	.18	.93	½	1¼	71		
54822BE		400 Navy	¼	4.38	1.93	1.41	.17	.96	¼	¾	76	BLUE	
54821BE	400 kcmil	775/24 = 313 kcmil	¾	4.43	1.93	1.41	.17	.96	¾	1	76		
54874BE		300 Flex, 350, 259 Str.	½	5.51	3.00	1.41	.17	.96	½	1¼	76		
54823BE			¼	4.93	1.94	1.61	.22	1.10	¼	¾	87	BROWN	
256-30695-1119		400 Weld, G, H, I	¾	5.00	1.93	1.61	.22	1.10	¾	1	87		
256-30695-1119P	500 kcmil	925/24 = 373 kcmil	¾	5.00	1.93	1.61	.22	1.10	¾	1	87		
54876BE		350, K	½	6.00	3.00	1.61	.22	1.10	½	1¼	87		
54824BE		450, I, K	¾	5.70	2.80	1.75	.24	1.20	¾	1	94	GREEN	
54878BE	600 kcmil	1100/24 = 444 kcmil	½	5.83	3.00	1.75	.24	1.20	½	1¼	94		
54879BE	700 kcmil	1325/24 = 535 kcmil	½	5.83	3.00	1.80	.24	1.25	½	1¼	99	PINK	
256-30695-1222			¾	5.25	2.06	1.94	.27	1.33	½	1	106	BLACK	
256-30695-1222P	750 kcmil	500, G, H, I, K	¾	5.25	2.06	1.94	.27	1.33	½	1	106		
54880BE		1325/24 = 535 kcmil	½	6.20	3.00	1.94	.27	1.33	½	1¼	106		
58884BE		1600/24 = 646 kcmil	½	6.16	3.00	1.94	.27	1.33	½	1¼	106	YELLOW	
58826BE	900 kcmil	1925/24 = 777 kcmil	½	6.74	3.00	2.18	.31	1.50	½	1¼	115		
54826BE			¾	6.49	2.80	2.27	.30	1.55	¾	1	125	N/A	
54882BE	1000 kcmil	1000 Navy	½	6.66	3.00	2.27	.30	1.55	¾	1¼	125		
54888BE	1250 kcmil	929, 2300/24	½	7.88	3.00	2.42	.35	1.67	¾	1¼	140		

† Contact Technical Services for specific stranding listings

* UL® Listed for direct-burial applications

Connectors & Grounding — Blackburn® Compression Connectors Featuring the Color-Keyed® System