

FOCIS Flex Lite – Fiber Optic Connector Inspection System

U.S. Patent 9,217,688

Easy, Fast, Compact, Tether-free

Features

- 1-button to auto-focus, center, capture, analyze, and display results
- IEC, IPC, and user-defined pass/fail analysis
- Untethered, compact, hand-held inspection
- Cost-effective inspection without compromise

Applications

- Inspect connectors on patch cords or in bulkhead adapters
- Optical network installation, troubleshooting, and maintenance
- Inspect MPO/MTP multi-fiber connectors
- Assure critical fiber infrastructure performs properly
- Keep fiber connections working at optimal performance levels
- Verify proper connector cleaning practices are being used



The FOCIS Flex Lite excels in quickly and accurately analyzing fiber connectors, providing technicians with clear and reliable results based on industry and user-defined criteria. With the press of a single button, FOCIS Flex Lite auto-focuses, centers and captures the end-face image, analyzes connector by applying pass/fail rules, and displays results instantly. This simple operation eliminates guesswork, enabling precise and reliable inspection within seconds. It is fast, small, and easy to use to enable 100% connector inspection.

Independent, untethered operation: FOCIS Flex Lite can be used independently without requiring an external OTDR or display unit. Its untethered, portable design with integrated display is compact, and a rechargeable battery makes it ideal for on-the-go technicians and high-volume service providers. Its user-friendly design and straightforward operation, allowing technicians to easily navigate through the inspection process.

Wide range of adapter tips: Interchangeable adapter tips support connector inspection for a wide range of both single-fiber and multi-fiber patchcords and bulkhead-mounted connectors having either PC or APC polished end-faces.

Affordable solution: The FOCIS Flex Lite is designed to meet high-volume demand from service providers seeking a cost-effective option without compromising on essential features, analysis, and inspection performance. FOCIS Flex Lite makes connector inspection simple, fast, and convenient.

FOCIS Flex Lite – Fiber Optic Connector Inspection System

U.S. Patent 9,217,688

Easy, Fast, Compact, Tether-free

Product Highlights



Single-button Operation



Untethered Inspection



Long Battery Life



USB-C Power Port / Software Upgrades

Wide range of adapter tips
Interchangeable adapter tips for a wide range of both single-fiber and multi-fiber connector inspection..



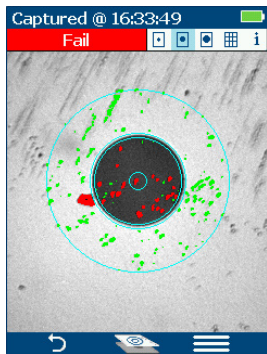
Large color display
Integrated display with a simple-to-navigate user interface and clear pass/fail indicators.

Pass/Fail results in seconds
Pass/fail analysis based on industry or user-set criteria are easily viewed in either Image or Table view.

Independent operation
Used independently without requiring an external OTDR or display unit.



User Interface Highlights



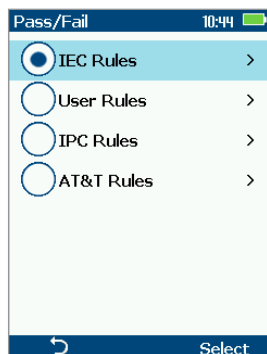
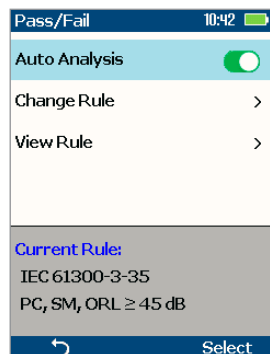
Results displayed in Image view shows the following data:

- Image view shows end-face image with pass/fail region overlay
- Failing scratches/defects highlighted in red
- Passing scratches/defects highlighted in green.

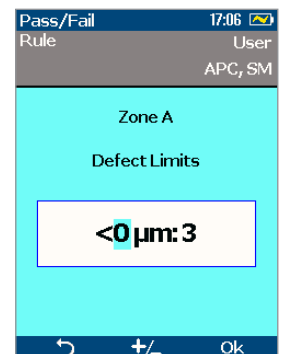
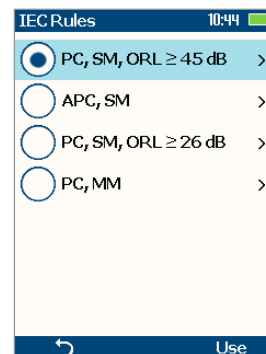
A B C	///	•••••
A	>0 μm : 0	>0 μm : 1
B	>3 μm : 0	>5 μm : 4
C		
D		>10 μm : 1

Results displayed Table view shows the following data:

- Analysis rule applied to determine pass/fail
- Analysis Zone IDs (A, B, C, D),
- Scratch analysis results for each zone, and defect analysis results for each zone



A B C	///	•••••
A	>0 μm : 0	>0 μm : 0
B	>3 μm : 0	>5 μm : 0
C		
D		>10 μm : 0



Pass/fail analysis based on industry or user-set rules

FOCIS Flex Lite – Fiber Optic Connector Inspection System

U.S. Patent 9,217,688

Easy, Fast, Compact, Tether-free

Specifications ^a

Optical Performance	
Field of View (viewed on FOCIS Flex Lite)	Live: 710 x 860 μm; Captured, Zoomed Out: 560 x 600 μm; Captured, Partially Zoomed In: 360 x 390 μm; Captured, Fully Zoomed In: 180 x 195 μm
Manual Detection Capability (minimum)	0.25 μm
Auto Analysis Resolution	<1.0 μm
Operating Features	
Focus	Auto-focus and manual focus
Centering	Auto-centering after capture
Pass/Fail Analysis	IEC 61300-3-35 (2015), IPC and user-defined criteria
Supported Languages	English, Chinese Simplified, Chinese Traditional, Finnish, French, German, Italian, Japanese, Korean, Polish, Russian, Spanish, Turkish
Physical and Power Characteristics	
Display size, type, resolution	2.4", TFT, 240 x 320 with brightness control
Battery Type	LiPol, user replaceable
Battery Operating Time (typical)	8 hours (60 tests in 20 minutes each hour; auto-off enabled)
Recharge Time	<4.5 hours
Power Save Features	Auto-off (disabled, 2, 5, 10 minutes)
Charger	USB-C
Size	47 x 37 x 175 mm (1.8 x 1.5 x 6.8 in)
Weight	170 g (0.37 lb)
Environmental Characteristics	
Operating Temperature	0 to +50 °C
Storage Temperature	-40 to +70 °C
Relative Humidity	95%, non-condensing
Transit and shock	2G vibration, 30G shock

Notes:

a. All specifications valid at 23°C ±2°C (73.4°F ±3.6°F).

FOCIS Flex Lite – Fiber Optic Connector Inspection System

U.S. Patent 9,217,688

Easy, Fast, Compact, Tether-free

FOCIS Flex Lite Adapter Tips (Contact AFL for adapter tips for other connector types)

AFL NO.	Description
FFLX-01-SC	SC-UPC bulkhead adapter tip
FFLX-01-FC	FC-UPC bulkhead adapter tip
FFLX-01-ST	ST-UPC bulkhead adapter tip
FFLX-01-LC	LC-UPC bulkhead adapter tip
FFLX-01-U25	Universal 2.5 mm, UPC ferrule adapter tip
FFLX-01-U125	Universal 1.25 mm, UPC ferrule adapter tip
FFLX-4S-ASC	SC-APC bulkhead adapter tip
FFLX-4S-AFC	FC-APC bulkhead adapter tip
FFLX-4S-ALC	LC-APC bulkhead adapter tip
FFLX-01-A25	Universal 2.5 mm, APC ferrule adapter tip
FFLX-01-A125	Universal 1.25 mm, APC ferrule adapter tip
FFLX-01-EXTS46	FOCIS Flex Lite adapter extension tube, straight, 46 mm
FFLX-01-EXTS80	FOCIS Flex Lite adapter extension tube, straight, 80 mm:
FFLX-4S-E2K	E2000 PC/UPC bulkhead adapter tip
FFLX-4S-E2KA	E2000 APC bulkhead adapter tip
FFLX-4S-OTA	Tip for SC/APC (OptiTap®) bulkhead adapter
DFS1-01-0013MR	Tip for OptiTip® APC ferrule and bulkhead adapter
DFS1-00-0037MR	MTP/PC ferrule & bulkhead adapter extended tip kit (base plus MTP/PC front end tip)
DFS1-00-0042MR	MTP/PC and MTP/APC ferrule & bulkhead adapter extended tip kit (base, MTP/PC, MTP/APC front end tips)
DFS1-01-0010MR	MTP/APC ferrule and bulkhead adapter extended tip kit (base plus MTP/APC front end tip)


Ordering Information

AFL NO.	Description
FOCIS-LITE-N	FOCIS Flex Lite Kit, soft carry case/holster, USB-C cable, reference guide, no tips
FOCIS-LITE-U	FOCIS Flex Lite Kit, soft carry case/holster, USB-C cable, reference guide, 2 user-selected UPC adapter tips (ferrule and bulkhead), user-selected One-Click cleaner
FOCIS-LITE-A	FOCIS Flex Lite Kit, soft carry case/holster, USB-C cable, reference guide, 2 user-selected APC adapter tips (ferrule and bulkhead), user-selected One-Click cleaner
FOCIS-LITE-UA	FOCIS Flex Lite Kit, soft carry case/holster, USB-C cable, reference guide, user-selected UPC adapter tips (ferrule and bulkhead), 2 user-selected APC adapter tips (ferrule and bulkhead), user-selected One-Click cleaner

FOCIS Flex Lite – Fiber Optic Connector Inspection System U.S. Patent 9,217,688


Easy, Fast, Compact, Tether-free

Recommended Products



OFI-BIPM Optical Fiber Identifier

- World class signal sensitivity
- Trigger lock, positive stop for optimum detection
- Integrated optical power meter option



One-Click® Cleaners

- Patented single-action
- Variety of sizes and types
- Low cost per clean

Qualifications

Category	Regulation/Standard	Qualification
CE Marking	EU	Compliant to relevant EU Directives on health, safety, and environmental protection, and certified with CE marking
Safety /EMC /EMI	IEC	Compliant to IEC 61010-1 for safety requirements for electrical equipment
	EN	Compliant to EN 61010-1 for safety requirements for electrical equipment
	IEC	Compliant to IEC 61326-1 for EMC requirements for electrical equipment
	EN	Compliant to EN 61326-1 for EMC requirements for electrical equipment
	EN	Compliant to EN 55011 for EMC requirements for industrial, scientific and medical equipment
	FCC	Compliant to code of federal regulations FCC 47 CFR 15 on unlicensed transmissions
RoHS	EU	Compliant to EU regulations Directive 2011/65/EU (RoHS 2) and Directive 2015/863 (RoHS 3)
Test Method	IEC	Compliant to IEC 61300-3-35 for visual inspection of fiber optic connectors and fiber-stub transceivers
	IPC	Compliant to IPC-8497-1 for cleaning methods and contamination assessment for optical assembly



Debbi Kosakowski - National Sales Manager • dkosakowski@specialized.net • 727-515-0911
 Eleanor Barszowski - NE Regional Sales Manager • ebarszowski@specialized.net • 484-955-3178
 Carolyn Thompson - CSR Midwest/NE • carolyn@specialized.net • 813-295-9889
 Becca Bowman - CSR NE/Western • bbowman@specialized.net • 727-412-1591